

POWER of CONNECTION

Blending Tech, Creativity,
and Human Ingenuity



KSHA 2025 Convention

February 26-28
Lexington, KY



JOIN US!

LEXINGTON, KY | FEBRUARY 26-28, 2025

Experience the *Power of Connection* at the 2025 Kentucky Speech-Language-Hearing Association Convention.

Connection: a relationship in which a person, thing, or idea is linked or associated with something else. As professionals in speech-language pathology and audiology, we strive to make connections every day with our students, clients, patients and their families. We invite you to embrace the transformative *Power of Connection* at the 2025 Kentucky Speech-Language-Hearing Association Convention.

Please join us as we explore the theme, *Power of Connection: Blending Tech, Creativity, and Human Ingenuity*. This dynamic Convention will provide a platform to engage with cutting-edge technology, innovative practices and creative problem-solving strategies. It's also a great opportunity to network with colleagues, exchange ideas and discover new ways to enhance your professional practice.

Don't miss the chance to be part of a vibrant community dedicated to advancing the fields of speech-language pathology and audiology. Together, let's harness the *Power of Connection* to inspire change and achieve excellence in our work!



Your Chairs,
Barbara Martha Shaw
and **Allison Hatcher**



KSHA 2025 Convention | February 26-28 | Lexington, KY

SPECIAL SESSION OFFERINGS (All qualifying sessions are indicated on pages 6-7)

Each year, KSHA invites presenters to specifically help you meet Licensure and ASHA special continuing education requirements. We are pleased to announce our invited DEI, Supervision and Ethics Invited Presenters:

DEI Wednesday
12:00 pm-2:00 pm

*Empowering SLPs/AuDs:
Building Cultural Proficiency
for Inclusive Patient Care*
(S05)

Jaime Welborn, PhD



Jaime Welborn

This interactive session invites speech-language pathologists and audiologists on a journey towards culturally proficient patient care. Attendees will engage with fellow SLPs and AuDs through a reflective, dialogic and action-oriented process.

SUPERVISION Wednesday
12:00 pm-2:00 pm

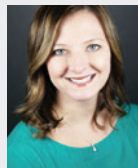
*SLP Supervision:
A Practical Guide* (S07)

Donna Morris, MA, CCC-SLP and
Aimee Sayre, MA, CCC-SLP

This session will engage participants in exploring supervision through a panel discussion with a professor, medically-based supervisor and a graduate student. Topics such as the new ASHA requirements, styles and strategies for effective supervision, learning stages, student feedback and student perceptions will be discussed.



Donna Morris



Aimee Sayre

ETHICS Wednesday
3:30 pm-5:30 pm

*Recognizing and Resolving
Ethical Challenges in Everyday
Practice* (S10)

Janice Kuperstein, PhD, PT, MEd, FNAP

In this session, we will acknowledge the pervasiveness of ethical choices we make daily, co-create a list of real-life issues in the ethical realm and consider extrinsic factors that increase the challenges. We will then specifically consider ethical frameworks including virtue ethics, rule or code-based ethics and consequentialism to resolve identified scenarios.



Janice Kuperstein

See page 5 for current Licensure and ASHA requirements.

SPECIAL ACTIVITIES

Back By Popular Demand

Spirit Day and Tailgate

Thursday 5:00 pm

Show your support for your favorite university team competing in the Golden Brain Competition! Wear your college gear and join us for games, fun and a bit of competitive razzing! CEUs available (S38)

Member Forum: United We Stand: Advocacy Essentials for Kentucky SLPs and AuDs

Wednesday 12:00 pm - 2:00 pm

This enhanced format will provide a more in-depth advocacy experience, updates from the KSHA lobbyist, Kate Wood Hall, and the popular roundtables where participants can ask questions and help fellow colleagues.

Silent Auction

Thursday 4:00 pm - 5:40 pm

Each university will be competing for the right to claim the first and second place KSHA cash awards. Please help them achieve their goal by placing a generous bid.

Student Session



SESSION 17 Initial Licensure and Certification 101

Thursday, 10:45 am - 12:15 pm

Presented by KSHA President

Leigh Anne Roden, Ed.D., CCC-SLP

Poster Presentations/Competition

Thursday, 12:30 pm - 2:00 pm

(CEUs Available)

Deadline to submit a poster is January 16, 2025. Visit ksha.info.

Undergraduate Student Poster Presentation Awards \$300

1st Place \$200 | 2nd place Award \$100

Graduate Student Poster Presentation Awards \$300

1st Place \$200 | 2nd place Award \$100

Professional Poster Presentation Award \$200

Note: Scoring based on written and oral presentation. Prizes awarded to first author only.

Lunch Options

Grab n' Go Market

A variety of snacks, sodas, premade salads and sandwiches will be available for purchase Wednesday - Friday.

Friday - Awards Luncheon - \$20

New this year, attendees will enjoy a buffet. Preregistration is required. Be sure to purchase your ticket when registering. A limited number of tickets will be available for purchase onsite.

Continuing Education

ASHA Continuing Education



ASHA CE

APPROVED PROVIDER

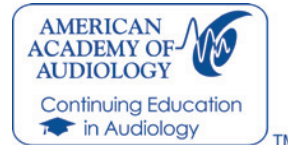
This course is offered for up to 2.0 ASHA CEUs (Various levels).

* The ethics session (S10) is offered separately for 0.2 ASHA CEUs. (Intermediate Level)

*The DEI session (S05, S11 and S45) is offered separately for up to 0.35 ASHA CEUs. (Various Levels)

*The supervision sessions (S07) is offered separately for up to 0.2 ASHA CEUs (Introductory Level)

AAA Continuing Education



Kentucky Speech-Language-Hearing Association is approved by the American Academy of Audiology to offer Academy CEUs for this activity. The program is worth a maximum of 1.8 CEUs. Academy approval of this continuing education activity is based

on course content only and does not imply endorsement of course content, specific products, or clinical procedure, or adherence of the event to the Academy's Code of Ethics. Any views that are presented are those of the presenter/CE Provider and not necessarily of the American Academy of Audiology.

International Institute of Hearing Instruments Studies



This program has been submitted for 18.0 International Hearing Society CE credits.

HIGHLIGHTED PRESENTERS

Learn more about each presenter by visiting the KSHA Website, ksha.info



Meg Adkins

AuD, FAAA

Presenting *Adult and Pediatric Cochlear Implant Assessment and Programming Challenges* (S61), on Friday.



John Ashford

PhD, CCC-SLP

Presenting *Dysphagia and Its Assessment With Patients in Non-Acute Care Settings* (S42, S49, S56, S62), on Friday.



Theodora Bowman

AuD, CCC-A

Presenting *Psychosocial Impacts of Pediatric Hearing Loss* (S35), on Thursday.



Brittany Brose

AuD, CCC-A

Presenting *Aging Vestibular System and Assessment Challenges* (S01), on Wednesday.



Kelsey Brown

MS, CCC-SLP

Presenting *AAC for Toddlers and Preschoolers: Getting Started* (S54) and *Embracing Echolalia: Songs and Scripts for the Speech-Language* (S63), on Friday.



Matthew Bush

MD

Presenting *Connecting Radiology to Clinical Decision Making: Transdisciplinary Cases for the Hearing Healthcare Provider* (S48), on Friday.



Felice Clark

MS, CCC-SLP

Presenting *Play-Based Therapy Ideas to Target Speech and Language Goals* (S51), *Articulation Carryover - How to Help Your Students Graduate Speech* (S55) and *How to Use Books to Cover Speech and Language Goals* (S65), on Friday.



Caitlin Conley

MEd

Presenting *Navigating Multidisciplinary Advocacy in Kentucky's Early Intervention System* (S50), on Friday.



Jasmin Cummins

MS, CCC-SLP, BCS-S

Presenting *Dysphagia and High Flow Nasal Cannula: Are we Full of Hot Air?* (S02), on Wednesday.



Jill Ligon Davis

MS, CCC-SLP

Presenting *Counseling for Individuals With Acquired Brain Injury - The Role of the SLP* (S34), on Thursday.



Tyler Dorsey

CALC, ACC

Presenting *Understanding ADHD* (S67), on Friday.



Cari Ebert

MS, CCC-SLP

Presenting *Autism and Neurodiversity Affirming Practices* (S11) and *Using Connection and Co-Regulation to Address Challenging Behavior* (S22), on Thursday.



Kellie Ellis

PhD, CCC-SLP

Presenting *Language Engineering: Building Language Skills to Support Academic Growth* (S43) and *Sound Strategy? The Latest on Speech Perception* (S52), on Friday.



Amy Engelhoven

PhD, CCC-SLP, CBIS

Presenting *Clinical Myopia: Looking Beyond the Diagnosis* (S25), on Thursday.



Marc Fagelson

PhD, CCC-A

Presenting *Tinnitus Mechanisms: Update and Review* (S16, S21), on Thursday.



Darla Gardner

MS, CCC-SLP

Presenting *Early Childhood Response to Intervention: A Language-Based Approach to Academic Success* (S13), *Using Themes to Align Early Childhood Speech Therapy With State Standards* (S23) and *Supporting Parents Through the Early Language and Literacy Journey* (S36), on Thursday.



Karah Gottschalk

AuD, PhD

Presenting *Hearing Loss and Cognitive Function* (S27), on Thursday.



Mary Jo Cooley Hidecker

PhD, CCC-A/SLP, F-NAP

Presenting *Developing Language and Communication While Using Augmentative and Alternative Communication(AAC)* (S26), on Thursday and *Communication and Augmentative and Alternative Communication (AAC) Goals for the IEP* (S41), on Friday.



Marie Ireland

MEd, CCC-SLP, BCS-CL

Presenting *Screening and Evaluation for Early Learners: Considering the Post Pandemic Skills Gap* (S31), on Thursday, and *Supporting Culturally and Linguistically Diverse Families: Considerations for Early Intervention* (S45), on Friday.



Joneen Lowman

PhD, CCC-SLP

Presenting *Innovative Technologies: Advancing Pre-Professional Preparation and Professional Practice* (S06), on Wednesday and *Early Intervention, Anywhere: Leveraging Telehealth for Young Children and Families* (S24), on Thursday.



Jennifer Marshall

MA, CCC-SLP

Presenting *Next Steps: Cleft Lip and Palate Birth to 3* (S03), on Wednesday and *Now What? Exploration of Craniofacial Anomalies in School Aged Children* (S59), on Friday.



Shelley Moats

AuD, PASC

Presenting *Updating Your Pediatric Audiology Toolbox* (S60), on Friday.



Judith Page

PhD, CCC-SLP, F-ASHA, F-NAP

Presenting *Communication and Augmentative and Alternative Communication (AAC) Goals for the IEP* (S41), on Friday.



Hanna Prince

MA, CCC-SLP

Presenting *Dysphagia and High Flow Nasal Cannula: Are we Full of Hot Air?* (S02), on Wednesday.



Amanda Schaumburg

MS, CCC-SLP

Presenting *IEPs for SLPs* (S14), *Data Collection and Goal Writing Best Practices* (S18) and *Can You Balance It? Self Advocating and Setting Boundaries in the Work Place* (S32), on Thursday.



Meg Shake

MS, CCC-SLP

Presenting *Stuttering | Cluttering: Differentiation, Diagnosis and Therapeutic Focus* (S04), on Wednesday and *Working Hard but Nothing's Working: Time For A Therapy Upgrade!* (S29), on Thursday.



Adria Thompson

MA, CCC-SLP

Presenting *Dementia Deep Dive: Bridging Lived Experience With Evidence-Based Strategies* (S12, S19), on Thursday.



Ricardo Vallejo

AuD

Presenting *Adult and Pediatric Cochlear Implant Assessment and Programming Challenges* (S61), on Friday.



Gail Whitelaw

PhD, MHA

Presenting *Amplification and Functional Hearing Loss: Technology and Normal Hearing* (S39), on Friday.

Licensure and ASHA Special Education Continuing Education Requirements

All qualifying sessions are marked on pages 6 and 7.

Category	ASHA 3 Year Interval Certification: 30 PDHS	Licensure Biennial Period
DEI	2 hours of the required thirty (30) required PDHS	Not required at this time.
Ethics	1 hour of the required thirty (30) required PDHS	2 hours of the required thirty (30) continuing education hours and 2 hours of the required fifty (50) hours for those holding dual licenses.
Supervision/ Clinical Instruction	One time requirement for those in a student/ CF supervisory position, earn at least two hours post-certification	Not Required at this time.

LEXINGTON 2025

To learn more about each session, visit KSHA.info

TIME	SESS	TITLE	TRACK	SPEAKERS
WEDNESDAY 2/26/2025				
Registration 9:00 am – 6:00 pm • Exhibits Open 11:30 am - 4:00 pm				
10:00 am - 11:30 am	S01	Aging Vestibular System and Assessment Challenges	Audiology	Brose
	S02	Dysphagia and High Flow Nasal Cannula: Are we Full of Hot Air?	Adult SLP	Cummins; Prince
	S03	Next Steps: Cleft Lip and Palate Birth to 3	PEDs EI	Marshall
	S04	Stuttering I Cluttering: Differentiation, Diagnosis and Therapeutic Focus	School Based	Shake
12:00 pm - 2:00 pm	S05	Empowering SLPs/AuDs: Building Cultural Proficiency for Inclusive Patient Care	DEI	Welborn
	S06	Innovative Technologies: Advancing Pre-Professional Preparation and Professional Practice	Multi-Interest	Lowman; Allen
	S07	SLP Supervision: A Practical Guide	Supervision	Sayre; Morris
	S08	United We Stand: Advocacy Essentials for Kentucky SLPs and AuDs	Multi-Interest	Roden; Hall
2:15 pm - 3:15 pm	S09	Keynote: Personal Climate and Culture...It's Up to You	Multi-Interest	Brooks
3:30 pm - 5:30 pm	S10	Recognizing and Resolving Ethical Challenges in Everyday Practice	Ethics	Kuperstein
THURSDAY 2/27/2025				
Registration: 8:00 am - 5:00 pm • Exhibits Open 8:00 am • Coffee and Light Breakfast Option Available				
9:00 am - 10:30 am	S11	Autism and Neurodiversity Affirming Practices	School Based	Ebert
	S12	Dementia Deep Dive: Bridging Lived Experience With Evidence-Based Strategies, Part 1	Adult SLP	Thompson; Lowe
	S13	Early Childhood Response to Intervention: A Language-Based Approach to Academic Success	School Based	Gardner
	S14	IEPs for SLPs	School Based	Schaumburg
	S15	Love & Hate: Do the Right Thing With Language Sampling	School Based	Arndt; Davis
	S16	Tinnitus Mechanisms: Update and Review, Part 1	Audiology	Fagelson
10:45 am - 12:15 pm	S17	Initial Licensure and Certification 101	Student	Roden
11:00 am - 12:30 pm	S18	Data Collection and Goal Writing Best Practices	School Based	Schaumburg
	S19	Dementia Deep Dive: Bridging Lived Experience With Evidence-Based Strategies, Part 2	Adult SLP	Thompson; Lowe
	S20	Let's Put the Fun in Funding for AAC	Multi-Interest	Glastetter-Stone; Craig
	S21	Tinnitus Mechanisms: Update and Review, Part 2	Audiology	Fagelson
	S22	Using Connection and Co-Regulation to Address Challenging Behavior	School Based	Ebert
	S23	Using Themes to Align Early Childhood Speech Therapy With State Standards	School Based	Gardner
12:30 pm - 2:00 pm	Posters	Poster Viewing	Posters	Various
1:30 pm - 3:00 pm	S24	Early Intervention, Anywhere: Leveraging Telehealth for Young Children and Families	PEDs EI	Lowman; Hairston
2:00 pm - 3:30 pm	S25	Clinical Myopia: Looking Beyond the Diagnosis	Adult SLP	Engelhoven
	S26	Developing Language and Communication While Using Augmentative and Alternative Communication (AAC)	School Based	Cooley Hidecker
	S27	Hearing Loss and Cognitive Function	Audiology	Gottschalk
	S28	Respiratory Muscle Training	Adult SLP	Goggin
	S29	Working Hard but Nothing's Working: Time for a Therapy Upgrade!	Multi-Interest	Shake
2:15 pm - 3:15 pm	S30	Pediatric Swallow Studies: How do They Impact Plans of Care?	PEDs EI	Forston
3:30 pm - 5:00 pm	S31	Screening and Evaluation for Early Learners: Considering the Post Pandemic Skills Gap	PEDs EI	Ireland

TIME	SESS	TITLE	TRACK	SPEAKERS
THURSDAY 2/27/2025 <i>Continued</i>				
4:00 pm - 5:00 pm	S32	Can You Balance It? Self Advocating and Setting Boundaries in the Work Place	School Based	Schaumburg
	S33	Collaboration Between MSD Teacher and SLP for Student Success	School Based	Noe; Stanley
	S34	Counseling for Individuals With Acquired Brain Injury - The Role of the SLP	Adult SLP	Davis; Ferguson
	S35	Psychosocial Impacts of Pediatric Hearing Loss	Audiology	Bowman
	S36	Supporting Parents Through the Early Language and Literacy Journey	School Based	Gardner
	S37	Swallowing and Cognitive-Communication Outcomes Post Left Ventricular Assist Device Placement	Adult SLP	Gamm; Weirich
5:00 pm - 7:30 pm	Special Event + S38	Tailgate and Silent Auction Finale (Bidding Closes at 5:40 pm) S38 Battle for the Golden Brain Starts at 6pm.(CEUs Available)	Special Event	Keefe
FRIDAY 2/28/2025				
Registration: 7:30 am - 4:30 pm • Exhibits Open 7:30 am • Coffee and Light Breakfast Option Available				
8:00 am - 9:30 am	S39	Amplification and Functional Hearing Loss: Technology and Normal Hearing	Audiology	Whitelaw
	S40	Coaching the Coach to Support Caregivers: A Cascading Approach to Coaching	School Based	Tomchek; Wheeler; Kohner-Coogle; Cheek
	S41	Communication and Augmentative and Alternative Communication (AAC) Goals for the IEP	School Based	Cooley Hidecker; Page; Kearns
	S42	Dysphagia and Its Assessment With Patients in Non-Acute Care Settings, Part 1	Adult SLP	Ashford
	S43	Language Engineering: Building Language Skills to Support Academic Growth	School Based	Ellis
	S44	SLP's Role in the Legal System	Multi-Interest	Page; Allen
	S45	Supporting Culturally and Linguistically Diverse Families: Considerations for Early Intervention	PEDs EI	Ireland
9:45 am - 11:15 am	S46	Autism and Apraxia: Assessment and Treatment From a PROMPT Perspective	School Based	Clark
10:00 am - 11:00 am	S47	Allocating Our Resources: How to Apply the Resource Allocation Model in Neuro Rehab	Adult SLP	Maddy
	S48	Connecting Radiology to Clinical Decision Making: Transdisciplinary Cases for the Hearing Health Care Provider	Audiology	Bush
	S49	Dysphagia and Its Assessment With Patients in Non-Acute Care Settings, Part 2	Adult SLP	Ashford
	S50	Navigating Multidisciplinary Advocacy in Kentucky's Early Intervention System	PEDs EI	Conley; Hairston; Roden
	S51	Play-Based Therapy Ideas to Target Speech and Language Goals	School Based	Clark
	S52	Sound Strategy? The Latest on Speech Perception	School Based	Ellis
11:30 am - 12:30 pm	Special Event	Awards Lunch, Annual Business Meeting Luncheon and Awards Ceremony	Special Event	Various
12:30 pm - 1:30 pm	S53	Luncheon: When Your Purpose Ignites Our Passion	Multi-Interest	Bracken
1:45 pm - 3:15 pm	S54	AAC for Toddlers and Preschoolers: Getting Started	PEDs EI	Brown
	S55	Articulation Carryover - How to Help Your Students Graduate Speech	School Based	Clark
	S56	Dysphagia and Its Assessment With Patients in Non-Acute Care Settings, Part 3	Adult SLP	Ashford
	S57	Establishing Speech Therapy in a NICU: How to be Tiny but Mighty	PEDs EI	Fears; Mathews
	S58	Helping Kentuckians With Hearing Loss With Obtaining and Maintaining Employment	Multi-Interest	Hadden
	S59	Now What? Exploration of Craniofacial Anomalies in School Aged Children	School Based	Marshall
	S60	Updating Your Pediatric Audiology Toolbox	Audiology	Moats
3:30 pm - 4:30 pm	S61	Adult and Pediatric Cochlear Implant Assessment and Programming Challenges	Audiology	Adkins; Vallejo
	S62	Dysphagia and Its Assessment With Patients in Non-Acute Care Settings, Part 4	Adult SLP	Ashford
	S63	Embracing Echolalia: Songs and Scripts for the Speech-Language Pathologist	PEDs EI	Brown
	S64	Executive Functioning Skills and Middle Schoolers	School Based	Twehues
	S65	How to Use Books to Cover Speech and Language Goals	School Based	Clark
	S66	Maximizing Student Outcomes Through Strong Teacher-SLP Collaboration	School Based	Tackett; Kiser
	S67	Understanding ADHD	Multi-Interest	Dorsey



**2025 KSHA CONVENTION
REGISTRATION INFORMATION**
KSHA.info



**KSHA 2025
CONVENTION**
LEXINGTON, KY
FEBRUARY 26-28

Convention Location
**Central Bank
Center**
430 West Vine Street
Lexington, KY 40507

Sleeping Rooms

Hyatt Regency Lexington

401 West High Street • Lexington, KY 40507

A special room rate of \$174 per night will be available until February 3, 2025 or until the room block is sold out, whichever occurs first. The Hotel is connected to the Central Bank Center.

- Book Online – **Visit ksha.info**
- Call – **800-233-1234**, mention Block Code G-SL25

KEYNOTE | Wednesday
2:15 pm – 3:15 pm

Gerry Brooks, Presents:



*Personal Climate and Culture...
It's Up to You (S09)*

During this session, attendees will learn strategies for making the workplace a pleasant place where faculty, administrators and support staff maintain mutual respect, regardless of personal differences. Attendees will be given ideas that can help promote a healthy, respectful working relationship even when opinions differ. Ideas that maximize opportunities to get to know colleagues and create camaraderie, taking advantage of 15 seconds here and there throughout the day, will be shared.

LUNCHEON | Friday
12:30 pm – 1:30 pm

Jeffrey Bracken, MA, Presents:



*When Your Purpose Ignites
Our Passion (S53)*

According to Maslow's Hierarchy of needs, we cannot reach our fullest potential unless we first satisfy our basic physiological needs, then our safety/security needs, and then our need for love and belonging. For us individuals with hearing or speech impairments, we can more easily be stuck in that second or third category. Despite all of us being made with unique gifts, skills and talents that can help us live out our passions, the struggle of inclusivity or belonging, is real. I hope to inspire you with my story and how your purposeful work allowed me to live out my passions and maybe reignite your passion.